

The Graduate Program in Genetics



Stony Brook University

Life on Long Island

SBU, CSHL, and BNL are located on Long Island in suburban settings. Housing is available on the SBU campus, but many students choose to live off-campus in apartments or shared houses. The area offers many opportunities to relax and have fun when you are not in the laboratory or classroom, with easy access to beaches, water sports, and other outdoor activities. SBU is a vibrant community of 20,000 undergraduate and graduate students pursuing their studies on the main campus or in the adjacent Health Science Center. SBU offers a wide array of cultural, social, and sports events, and the attractions of New York City can be reached by train in less than two hours.

Need more information?

We'll be happy to answer your questions!

Program Director:

Dr. Martha Furie

631-632-4232

Martha.Furie@stonybrook.edu

Program Administrator:

Ms. Kate Bell

631-632-8812

Kathryn.Bell@stonybrook.edu



Course of Study

Outlined below is a 'typical' course of study. However, note that the Program is highly flexible to meet our students' diverse needs. There are only three required core courses. Students also take six credits of elective courses, selected from a long list drawn from many departments. Our goal is to provide a well-rounded education that is tailored to the specific interests of each student.

Year 1

Fall semester

Graduate Genetics (required)

Molecular Genetics (required)

Laboratory Rotations

Student Seminar

Spring semester

Cell Biology (required)

Laboratory Rotations

Teaching Practicum

Journal Club

Student Seminar

Year 2

Fall semester

Elective

Dissertation Research

Teaching Practicum

Journal Club

Student Seminar

Spring Semester

Qualifying Examination

Elective

Dissertation Research

Teaching Practicum

Journal Club

Student Seminar

Year 3

Research Proposal Examination

Dissertation Research

Student Seminar

Year 4

Dissertation Research

Student Seminar

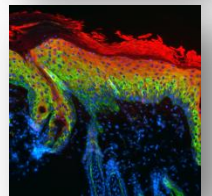
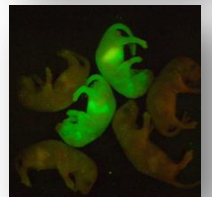
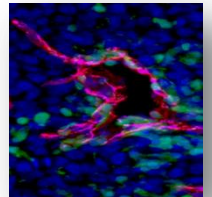
Year 5

Dissertation Research

Student Seminar

Submission of a First-Author Manuscript

Defense of the Dissertation

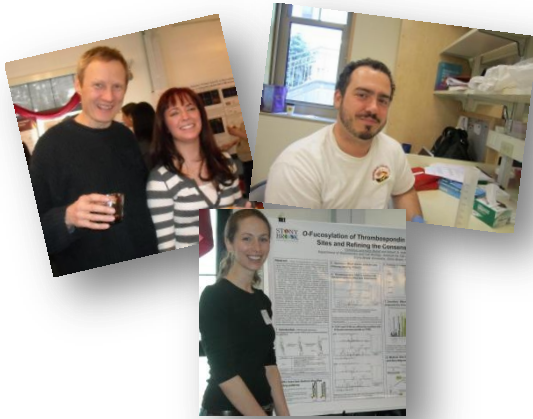


Overview

The Graduate Program in Genetics is an interdepartmental, inter-institutional course of study leading to a doctoral degree. It is based at Stony Brook University (SBU) but includes faculty at Cold Spring Harbor Laboratory (CSHL) and Brookhaven National Laboratory (BNL). Currently 42 students from all parts of the world are enrolled, nine of whom are pursuing research at CSHL. The faculty comprises 100 investigators with a wide range of research interests, and the Program prides itself on its diversity. All students receive a full tuition scholarship and a stipend, which will be \$27,600 for 2013-14.

The Scientific Environment

It's an exciting time to be at Stony Brook. A new Director is working with the students to make the Program in Genetics even more responsive to their needs. Ground has been broken for a Medical and Research Translation building, which will house 25 laboratories focusing on cancer research. A new Department of Biomedical Informatics and a hiring initiative in genomics will be providing more faculty mentors and resources to students in the near future. And the unique Alan Alda Center for Communicating Science offers popular courses geared toward graduate students. Combined with the already rich resources at SBU, CSHL, and BNL, these initiatives will make an already robust research environment even stronger.



Graduate Program in Genetics

Stony Brook University
Cold Spring Harbor Laboratory
Brookhaven National Laboratory

