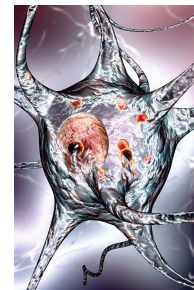


The Thomas Hartman Center for Parkinson's Research

Parkinson's Research Symposium



9:00 - 9:30 Coffee

9:30 - 9:40 Welcome

Alfredo Fontanini, MD PhD

Professor and Chair

Department of Neurobiology and Behavior

9:45 - 10:05 Awardee presentation 1

Markus Riessland, PhD

Assistant Professor

Department of Neurobiology and Behavior

The role of Annexin A1 in dopaminergic axonal dysfunction in Parkinson's Disease

10:10 - 10:30 Awardee presentation 2

Carine Maurer, MD PhD

Assistant Professor

Department of Neurology

Chuang Huang, PhD

Associate Professor

Departments of Radiology and Psychiatry

Subthalamic nucleus: Roles in cognition in Parkinson's Disease

10:35 - 10:55 Awardee presentation 3

Chi-kuo Hu, PhD

Assistant Professor

Department of Biochemistry and Cell Biology

Study the aging components of Parkinson's disease using the African killifish

11:00 - 11:10 Break

11:10 - 12:10 Keynote presentation

David Sulzer, PhD

Professor

Departments of Psychiatry, Neurology and Pharmacology; School of Arts

Columbia University

Autoimmune features of Parkinson's disease

12:15 - 1:30 Lunch break

1:30 - 2:00 Acknowledging **Wai Law** and

Dennis Almodovar for their support to the Hartman Center

2:05 - 2:25 Clinical presentation 1

Lisa Muratori, PT EdD

Professor

Department of Physical Therapy

Moving and thinking / Thinking and moving: the relationship between cognition and walking in people with Parkinson's disease

2:30 - 2:50 Clinical presentation 2

Guy Schwartz, MD

Clinical Assistant Professor

Department of Neurology

Parkinson's disease psychosis

2:55 - 3:15 Closing

Alfredo Fontanini, MD PhD



Stony Brook University